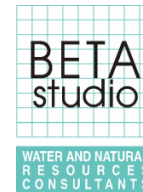


GRUPPO INGEGNERIA MANCINI



GRUPPO MANCINI



Hydraulic Engineering
Water Resources Management
Climate Change
Civil infrastructures
Renewable Energies



Aquae

Aquae Engineering



Infrastructure Engineering
Renewable energies
Environmental impacts evaluations
Architecture and Urban planning



Hydraulic Engineering
Protection, planning and management of
water and natural resources Civil
infrastructures Environmental
rehabilitation and ecological
conservation Irrigation and Land
Reclamation

STUDIO CALV^{B E A M}

Architecture Restoration
and Conservation,
Plants and Energy efficiency,
Structures and infrastructures,
Safety

ENGINEERING GROUP SERVICES



PROJECT MANAGEMENT

MASTER PLANNING

**FINANCIAL
COST-BENEFIT ANALYSIS**

**PRELIMINARY, DETAILED
FINAL DESIGN**

**ENVIRONMENTAL
ASSESSMENT**

**PREPARATION OF
TENDER DOCUMENTS**

**WORKS SUPERVISION
ON-SITE TECHNICAL ASSISTANCE**

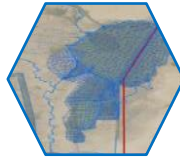
AREAS OF EXPERTISE



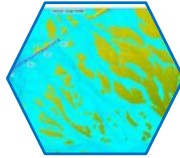
CLIMATE CHANGE / RENEWABLE ENERGY



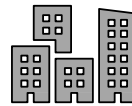
**WATER SUPPLY & SANITATION /
WATER RESOURCES MANAGEMENT**



**FLOOD RISK MITIGATION /
URBAN DRAINAGE**



**WATER 4.0: NON-REVENUE WATER,
EARLY WARNING SYSTEMS, ...**



URBAN PLANNING



INFRASTRUCTURES & ARCHITECTURE



SOLIDWASTE MANAGEMENT

S — P

**Studio
Ingegneria
Pulcini**

The Engineering Pulcini firm was founded in 1981 by Eng. Eugenio Achille Pulcini, with an initial focus on public works including hospitals, universities and research centres, entities for which over time it has developed projects aimed at works for over 2 billion euros of investments. Over the last twenty years, the firm has expanded its activities by providing technical assistance to private companies and other firms for the development of projects in the field of renewable energy sources, naturalistic engineering, structural redevelopment of large real estate systems and transport engineering for the design of public transport systems including the design of road works in both urban and extra-urban areas. With a recent strengthening of its staff in Italy, the firm has also focused on the management of landslide fronts and naturalistic engineering solutions.



The collaboration with CIRPS, started in 1990, has allowed SIP to dynamically address all engineering requests in highly diversified sectors in the naturalistic, energy, chemical, structural and organizational fields. The historic studio has transferred all its activities to a new company, whose objectives are statutorily benefit, which has kept the original name but sets itself new and ambitious objectives also in other sectors of engineering and architecture. Currently the studio has 7 direct collaborators and about 20 external collaborators hired based on the needs of the service provided also to partner studios.

Services :

- Project Management
- Design and Planning (Feasibility – Executive)
- Research and Development
- Financial Engineering
- Engineering and Green Energy
- Building and Infrastructure
- Environmental Assessment
- Integrated Approach to Carbon



WHOWEARE



ENRICO PETOCCHI
PRESEDENT OF SIP
ECONOMIST

More then 36 years of professional career in Capital Markets, Strategic Finance and Entrepreneurship. Worked for IMI (now Intesa Sanpaolo), Mediobanca, Bain & Company: before being and Entrepreneur since the foundation of Twice Corporate Finance (1993). Strategic founding Investor in various ventures, including Twice SIM (1999-2010) an Italian leading Direct Access Trading Platform and Corporate Broker, where acted as Managing Director until the trade sale to Intesa Sanpaolo's IWB Bank. In Italy and abroad, independent Board Member in various public companies (such as Marcolin, ITWay, Triboo) and executive Director in several private ventures (Borgosesia Gestioni SGR, Estubroker A.V., A.C. Ancona, Polytems HIR and more). Strategic Finance Advisor to several private and public corporates, including DeAgostini, Investitori Associati, Sear Pagine Gialle, Dolce & Gabbana, Gefran, GoldBet, Armando Testa, Digital Magics. Involved into blockchain & tokenization since 2017 and Certified Public Accountant since 1993,, served as Professor in Fintech Field Projects at Università di Bergamo (2018-2022).



Prof. DANIELE PULCINI
HEAD OF RESEARCH AND DEVELOPMENT

Researcher and associate professor CIRPS (Interuniversity Consortium for Research on Sustainable Development) – Sapienza University of Rome. Professor of energy systems and renewable sources at Wuhan University in China, with a specialization in advanced geothermal systems. Coordinator of AEREL research unit, CIRPS. Pulcini Engineering Studio, owner. Specialized in environmental and renewable energy engineering. Director Otherwise LTD, based in London. Head of R&D at GE Farm and Enoil Italia Spa, Erregi and Tecnorobotech, Study Center of Implea Mutua. For the UK investment platform / fund Daisuke Renewables is responsible for the engineering applied to RES ecosystems. CTS Gaia Energia member. It has developed and is developing methodologies for low environmental impact cultivation both with mechanical systems and through micro-irrigation solutions. It has implemented and is developing with a specialized team a system for the integrated design of floating photovoltaic systems. Member of the promoting committee for the localization of the UN University of Peace in Italy.



DINA K. ISHNEIWER
SUSTAINABILITY ARCHITECT

House modules



Wooden structure components:

Coniferous wood beams:

Kiln-dried (16%)
Planed, calibrated
Resistance class (C24)
Dimensions: 195x70 mm
Wind protection panel:
OSB - 3
Thickness - 12 mm

Insulation:

RockWool Superrock:
Lambda D (thermal conductivity) = 0.035 W/mK
U-value (thermal transmittance)(200 mm) = 0.175
W/m²K
Fire reaction = Euroclass - A1

Internal panel:

OSB - 3
Thickness - 12 mm Load-bearing

internal walls

Thickness: 195 mm

Wooden structure components:

Coniferous wood beams:

Kiln-dried (16%)
Planed, calibrated
Resistance class (C24)
Dimensions 195x72mm

Inter-storey slab

(Joists System). Quantity: 1 Set

Softwood beams:

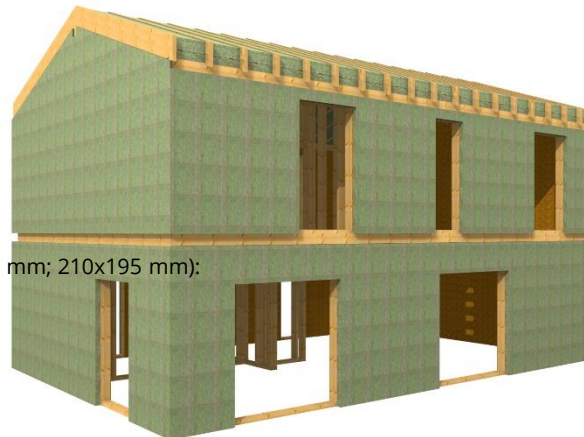
Dimensions 95x195 mm
Kiln dried (16%)
Planed, calibrated
Resistance class (C16/C24)
Covering (Rafter system). Quantity: 1 Set

Softwood beams: Dimensions

70x195mm:
Kiln dried (16%)
Planed, calibrated
Resistance class (C24)

Purlins:

Dimensions (70x195 mm; 140x195 mm; 210x195 mm):
Kiln dried (16%)
Planed, calibrated
Resistance class (C24)
Glue - D4 Compatible



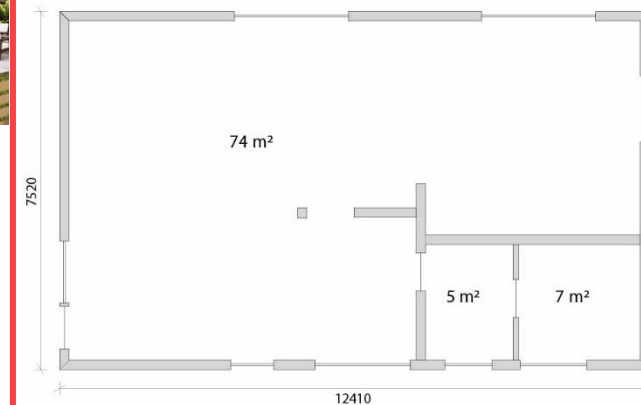
Passive house

Price : €68,186.88 (VAT excluded)

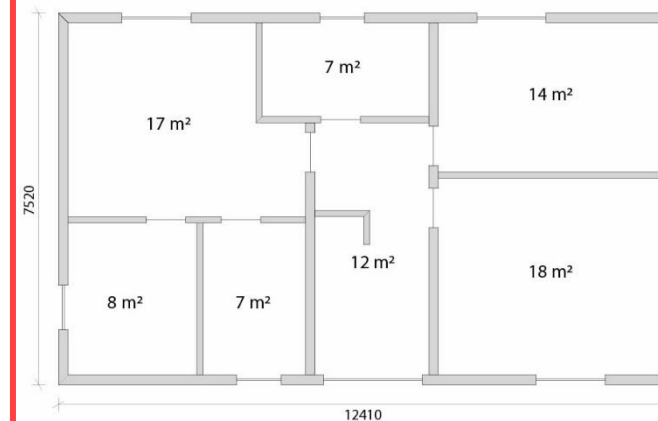
Living area: 169 m²

Prefabricated External Walls

Thickness: 319 mm



Ground Floor



First Floor

Wooden structure components:

Coniferous wood beams:

Kiln-dried (16%)
Planed, calibrated
Resistance class (C24)
Dimensions: 195x70 mm
Wind protection panel:
OSB - 3
Thickness – 12 mm

Insulation:

RockWool Superrock:

Lambda D (thermal conductivity) = 0.036 W/mK
U-value (thermal transmittance) (200 mm) = 0.175
W/m²K

Fire reaction = Euroclass – A1

Internal panel:

OSB - 3
Thickness – 12 mm Load-bearing

internal walls

Thickness: 195 mm

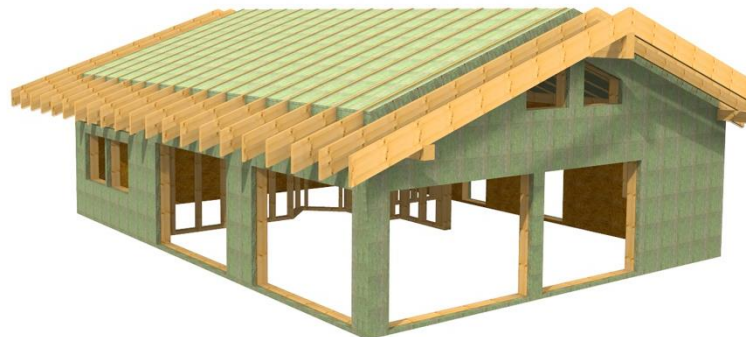
Wooden structure components:

Coniferous wood beams:

Kiln-dried (16%)
Planed, calibrated
Resistance class (C24)
Dimensions 195x72mm

Inter-storey slab

(Joists System). Quantity: 1 Set



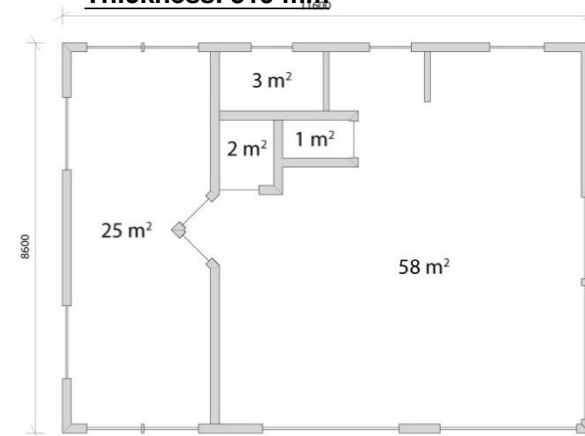
Passive house

Price : € 48,484.23 (VAT excluded)

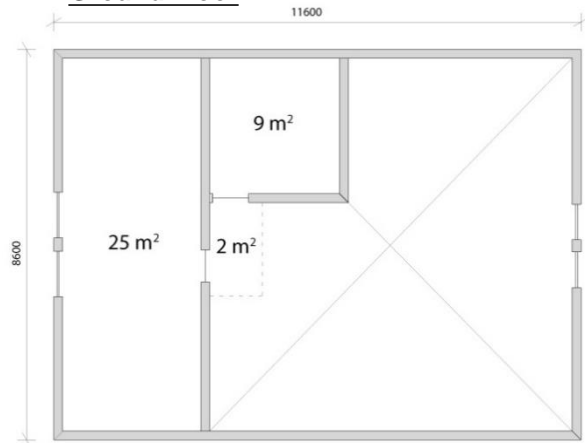
Living area: 125 m²

Prefabricated External Walls

Thickness: 319 mm



Ground Floor



First Floor

Wooden structure components:

Coniferous wood beams:

Kiln-dried (16%)

Planed, calibrated

Resistance class (C24)

Dimensions: 195x70 mm

Wind protection panel:

OSB - 3

Thickness - 12 mm

Facade membrane

Density 130 g/m²

Water vapour diffusion thickness 0.015 m

Vapour conductivity 80g/m²



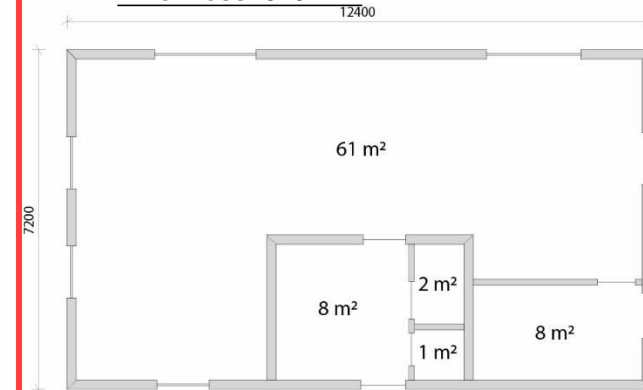
Passive house

Price : € 61,695.50 (VAT excluded)

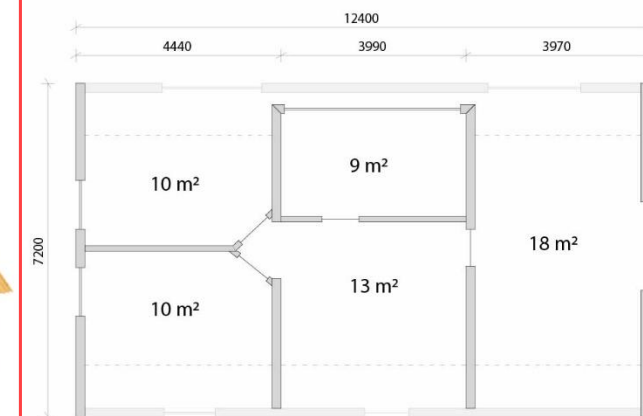
Living area: 140 m²

Prefabricated External Walls

Thickness: 319 mm



Ground Floor



First Floor



Wooden structure components:

Coniferous wood beams:

Kiln-dried (16%)

Planed, calibrated

Resistance class (C24)

Dimensions: 195x70 mm

Wind protection panel:

OSB - 3

Thickness - 12 mm



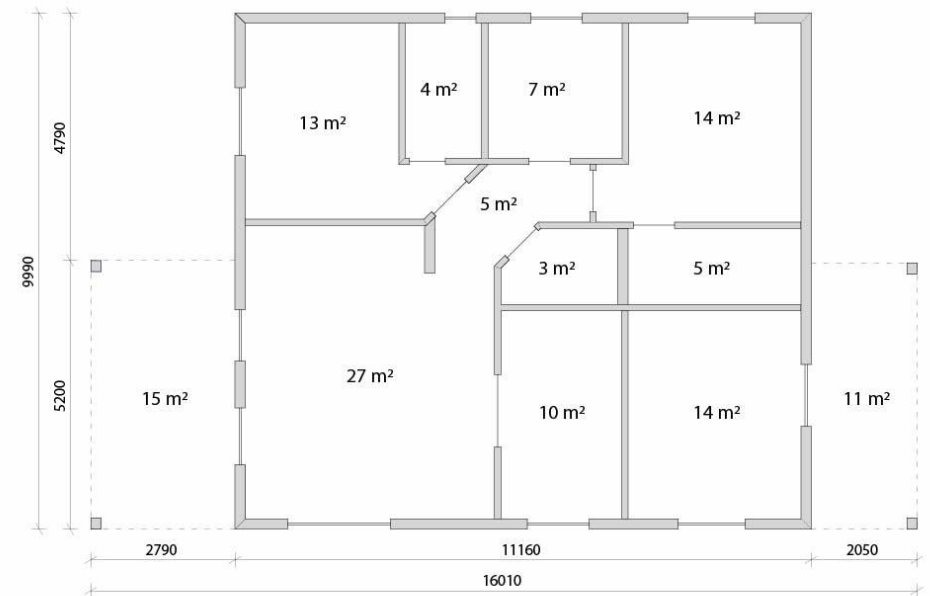
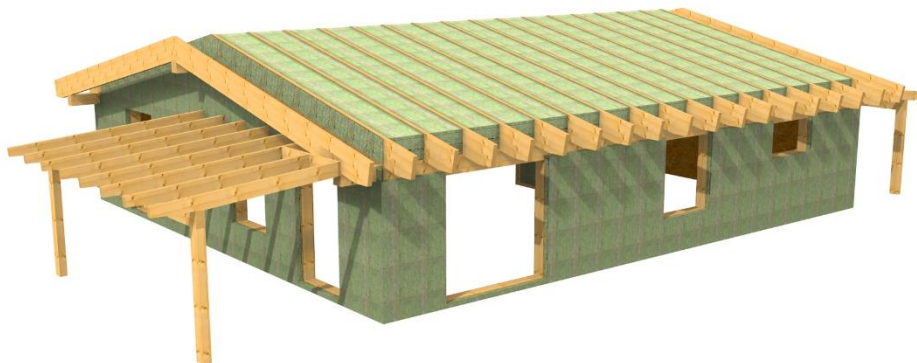
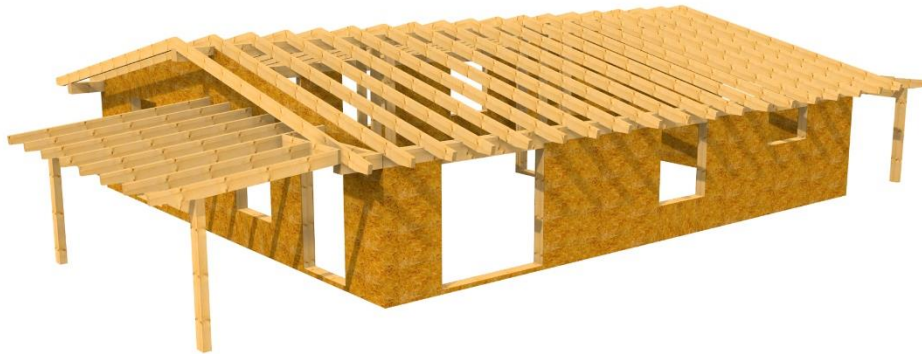
Passive house

Price : € 40,181.28 (VAT excluded)

Living area: 128 m²

Prefabricated External Walls

Thickness: 319 mm



Ground Floor

STUDIO CALV BEAM

Engineering and Architecture
STUDIO CALVI BEAM S.r.l.

HEADQUARTER
27100, via Severino Boezio 10
Pavia

T.+39 0382538817
@ info@studiocalvi.eu

www.studiocalvi.eu



Water and Natural Resources
Consultants
BETA STUDIO S.r.l.

HEADQUARTER
Via Guido Rossa, 29/A
35020 Ponte San Nicolò
Padova (Italia)

T.+39 049 8961120
info@betastudio.it

www.betastudio.eu

Aquae

Aquae Engineering



Engineering and infrastructure
Studio Ingegneria Pulcini s.r.l.

HEADQUARTER
Via Della Folgarella 57
00043 Ciampino Rome
(Italia)

T+ 39 351 906 1651
daniele.pulcini@studioingegneriapulcini.it

www.studioingegneriapulcini.it



**STUDIO GALLI
INGEGNERIA**

Sustainable Engineering for People and the
Environment
SGI Studio Galli Ingegneria s.r.l.

REGISTERED OFFICE
00198 Via Guido d'Arezzo, 5
Roma

HEADQUARTER
35030, via della Provvidenza 15
Sarmeola di Rubano, Padova

T.+39 0498976844
@ cmo@sgi-spa.it

www.sgi-spa.it